

# LLOYD LOOM

THE ORIGINAL

## CONTACT

[info@lloydloom.com](mailto:info@lloydloom.com)

view latest products at [www.lloydloom.com](http://www.lloydloom.com)

SINCE  1922





# Contents

## Garden Room

Burghley	5
Babbington	6
Buxton	7
Boston Lounge	8
Garden Room Dining	9

## Dining

York	11
Bourne	12
Derby	13
Wells	14
Boston	15
Bantam	16
Stamford	17

## Café/Bar Kitchen

Newmarket	19
Belvoir	20
Bistro	21
Beeby	22
Burghley	23
Bistro Stools	24
Athene/Neusis	24

## Bedroom/Bathroom

Linen Baskets	25
Barton	26
Trader	27
Balmoral	28
Bolero	28

## Reception

Nemo	30
Madrid/Cubes	31
Orient	31

Contract/Projects	32
-------------------	----

Tables	33
--------	----

Weave Colours	35
---------------	----

Fabrics & Leathers	36
--------------------	----



# Garden Room

“Wicker” furniture was popular in Victorian conservatories, but once the much superior Lloyd Loom became available it replaced Wicker as the furniture of choice. That still holds true and the traditional Lloyd Loom style and finish goes perfectly in today’s Garden Rooms and Conservatories.

The Babbington is our most popular range for the Garden Room. Also consider a Balmoral (page 28) to accompany it for variety. Look at the Buxton or Boston Lounge for luxury, the Burghley for classic comfort, and for dining look at the York or Stamford ranges on pages 11 & 17. For a stylish teatime consider the Belvoir range on page 20.







Illustrated in Nearly White weave with cushions in customers own fabric.

CLASSIC  
DESIGN

## Burghley

The original classic Lloyd Loom armchair, recreating the elegance of the past. The model is available in many guises. Both armchair and sofa come with either a drop-in cushion seat, as illustrated, or the armchair is available with a padded or flat weave seat. The flat weave seat is often ordered with a 1 inch cushion making it ideal for casual dining in restaurants or the home. There are several tables which complement the Burghley such as the Burghley, Canterbury, Belvoir or Babbington tables. The Babbington footstool is also a good match.



**BURGHLEY ARMCHAIR C001**  
W700 x D655 x H850  
SEAT H460  
padded seat available - C001P



**BURGHLEY ARMCHAIR WITH SKIRT C001S** W700 x D600 x H900  
SEAT H460  
padded seat available - C001SP



**BURGHLEY ARMCHAIR WITH DROP IN SEAT C001D**  
W710 x D570 x H830  
SEAT H470



**BURGHLEY SOFA WITH DROP IN SEAT S001D**  
W1500 x D640 x H835  
SEAT H460



**CANTERBURY TABLE WITH GLASS T013G** DIA590 x H460  
also available without glass - T013W





BABBINGTON ARMCHAIR  
C081 W820 x D850 x H800  
SEAT H470



BABBINGTON 2 SEATER SOFA  
S082 W1560 x D850 x H800  
SEAT H470



BABBINGTON 3 SEATER SOFA  
S083 W1910 x D850 x H800  
SEAT H470



BABBINGTON FOOTSTOOL  
ST084 W620 x D480 x H480



BABBINGTON SOFA TABLE T014W  
W590 x L1200 x H460  
available with glass T014G

# Babblington

For conservatories meant for relaxing. The whole range is great value and includes a comfortable armchair and two and three seater sofas. There is also an accompanying footstool - and a sofa table available with or without a shelf. Cushions can be made in any of our standard fabrics or your own choice of fabric.

Consider the Balmoral chair – page 28 as a partner for the Babblington.





Illustrated in Sage weave with cushions in Madura Oatmeal fabric

# Buxton

Deep and luxurious seating for your conservatory – or anywhere else you want to relax... The chair is fashionably wide – but still surrounds you comfortably. There is also a stylish companion table in two sizes.



**BUXTON GRAND CHAIR C071**  
W1000 x D880 x H820  
SEAT H460



**BUXTON 2 SEATER SOFA S065**  
W1600 x D880 x H820 SEAT  
H460



**BUXTON COFFEE TABLE T028W**  
W750 x D1200 x H430  
available with glass T028G



**BUXTON SIDE TABLE T031W**  
W590 x D590 x H430  
available with glass T031G



Illustrated in Espresso weave with cushions in customer's own fabric



# Boston Lounge

A lounge set with contemporary appeal which will look at home in any interior setting. It has been designed for comfort with carefully upholstered cushions and a high back for support. The range includes a comfortable chair, 2 and 3 seater sofas and a substantial footstool.



**BOSTON LOUNGE ARMCHAIR C050**  
W720 x D900 x H925  
SEAT H440  
includes 1 lumbar or scatter cushion



**BOSTON LOUNGE 2 SEATER SOFA S062**  
W1530 x D880 x H915  
SEAT H440  
includes 2 lumbar or scatter cushions



**BOSTON LOUNGE 3 SEATER SOFA S063**  
W1820 x D880 x H915  
SEAT H440  
includes 2 lumbar or scatter cushions



**BOSTON LOUNGE FOOTSTOOL ST051**  
W650 x D460 x H430





Wells Dining Chairs illustrated in Tarragon weave

## Dining in the Garden Room

The Conservatory or Garden room is increasingly used for dining. Often it is an extension to the kitchen and the centre of the home, a place where Lloyd Loom dining chairs come into their own. Their clean modern lines are complemented by the woven fabric which gives a natural "outdoor" feel.

Consider the variety displayed in the next few pages, bearing in mind the colour palette of the garden. Once you have decided on your preferred model, go to page 35 where all of our weave colours are shown and look especially at the lighter and more natural shades.



# Dining

Lloyd Loom weave is the up to the minute choice for dining chairs. The clean lines give a classic yet contemporary elegance, whilst the natural weave confers a relaxed mood.

Our dining chairs come in all shapes and sizes. The elegant Wells and Boston range are ideal for traditional dining; the Bourne and Derby have a contemporary tapered square leg design; the stylish Bistro and Bantam are ideal for a kitchen, café or restaurant. For the conservatory consider the original Lloyd Loom dining chair, the York and Stamford.







YORK DINING CHAIR  
C037MSP  
W480 x D560 x H990  
SEAT H475



YORK DINING CHAIR  
C037MSPB  
W480 x D560 x H990  
SEAT H475  
double weave back



Illustrated in Fawn weave with non-standard cushions in customer's own fabric

## York

A popular and reasonably priced dining chair with a padded weave seat. It is shown here with a non-standard cushion. In cases where a loose cushion is desirable, we would recommend using the Stamford chair with a "flat weave seat". We can supply 1 inch cushions in the fabric of your choice.



# Bourne

A neat contemporary dining chair with square section tapered legs. It has quickly become one of our most popular chairs and is available with a standard padded weave seat or with a fabric seat.



**BOURNE DINING CHAIR C025B**  
W460 x D520 x H970 SEAT H460  
double weave back



**BOURNE DINING CHAIR WITH FABRIC SEAT C025FB**  
W460 x D520 x H970 SEAT H470  
double weave back





DERBY DINING CHAIR C075  
W510 x D580 x H860  
SEAT H460



DERBY ARMCHAIR C075A  
W590 x D580 x H860  
SEAT H460



Illustrated in Espresso weave

## Derby

This strong modern dining chair has square section tapered legs and is wider than standard. The model is particularly popular as a carver.



**WELLS DINING CHAIR CO41**  
W440 x D650 x H1070  
SEAT H460



**WELLS DINING CHAIR CO41B**  
W440 x D650 x H1070  
SEAT H460  
double weave back



**WELLS DINING CHAIR WITH  
FABRIC SEAT CO41F**  
W440 x D650 x H1070  
SEAT H460



**WELLS DINING CHAIR WITH  
FABRIC SEAT CO41FB**  
W440 x D650 x H1070  
SEAT H460  
double weave back

## Wells

A very elegant high backed dining chair with a padded seat in weave or any of our standard fabrics, or if you prefer, with a fabric of your choice. This chair is available with either a "single weave back" as in the photograph, or with a "double weave back" as shown in the bottom right illustration.





Illustrated in Espresso weave

BRITISH  
ELEGANCE

# Boston

An elegant and substantial dining chair that is also very popular as a carver. The carver is available with a deep cushion, fully upholstered or with a flat weave seat to take a 1 inch cushion, the chair comes with a padded seat.



**BOSTON DINING CHAIR C039SSP**  
W500 x D610 x H1000 SEAT H450



**BOSTON CARVER C039**  
W640 x D620 x H1000 SEAT H450



**BOSTON CARVER WITH  
DROP IN SEAT C039D**  
W645 x D620 x H1000 SEAT H500



**BOSTON CARVER FULLY  
UPHOLSTERED C039U**  
W640 x D620 x H1000 SEAT H500





Illustrated in Sage weave

# Bantam

The Bantam is one of our most popular dining chairs. It is a compact chair, very comfortable and ideal for the home environment or for restaurants. It is available with either a weave or fabric seat. All models are available with the option of a double weave back.



**BANTAM DINING CHAIR C044**  
W485 x D585 x H950 SEAT H465



**BANTAM DINING CHAIR C044B**  
W485 x D585 x H950 SEAT H465  
double weave back



**BANTAM DINING CHAIR WITH  
FABRIC SEAT C044F**  
W485 x D585 x H950 SEAT H465



**BANTAM DINING CHAIR WITH  
FABRIC SEAT C044FB**  
W485 x D585 x H950 SEAT H465  
double weave back





STAMFORD DINING CHAIR C019

W500 x D580 x H950

SEAT H460

padded seat available - C019P



STAMFORD DINING CHAIR WITH  
MINI SKIRT AND PADDED SEAT  
C019MSP

W500 x D560 x H950

SEAT H465

flat seat available - C019MS

ORIGINAL  
DESIGN



Illustrated in Honey weave

## Stamford

One of the original Lloyd Loom of Spalding classics, available with or without a mini skirt and with a flat or padded weave seat - 1inch loose cushion available to compliment the flat weave seat option. There is a matching Stamford table in several standard sizes.

# Café/Bar & Kitchen

Lloyd Loom chairs, stools and tables have always been popular in tearooms, bars and cafes and can be seen in famous establishments around Great Britain and Europe. It is the furniture of the moment for the modern kitchen and home extension.

View our suggestions on the next few pages and consider the Babbington (Page 6) for that relaxing corner.







# Newmarket

A unique heritage design, dating from the 1930s that still appeals and is appropriate in many settings. It is an extremely comfortable and very pretty chair which is surprisingly sturdy. It creates a cosy environment in the kitchen and has been successfully used in many cafés and bars looking for something special. We can adjust the height of the stool to suit a variety of situations if required.



**NEWMARKET DINING CHAIR**  
**C006** W470 x D650 x H845  
 SEAT H460



**NEWMARKET STOOL ST006**  
 W520 x D640 x H1140  
 SEAT H810



**BELVOIR ARMCHAIR C002**  
W610 x D655 x H850 SEAT H460



**BELVOIR ARMCHAIR WITH SKIRT C002S**  
W610 x D600 x H850 SEAT H460  
padded seat available - C002SP



**BISTRO ROUND TABLE T010W** DIA760 x H760  
available with glass - T010G



**BISTRO SQUARE TABLE T011W** W760 x L760 x H760  
available with glass - T011G

## Belvoir

One of our most popular chairs which takes up less room than the similar but more curvaceous Burghley. It is often used as a casual dining chair and is available with either a padded or flat weave seat. The flat weave seat is often used with a 1 inch cushion which is available in any of our standard fabrics or in the fabric of your choice.





Illustrated in Duck Egg weave



# Bistro

One of our most sought after ranges - ideal for the kitchen or for café/restaurants. There are stools in various shapes and sizes to match the chair – see page 24.



**BISTRO DINING CHAIR C038**  
W430 x D550 x H880  
SEAT H460



**BISTRO DINING CHAIR C038B**  
W430 x D550 x H880  
SEAT H460  
double weave back



**BISTRO LOW STOOL ST003**  
W420 x D420 x H460



**BISTRO HIGH STOOL ST005**  
W420 x D420 x H760



**BISTRO BAR STOOL ST038**  
W430 x D440 x H880  
SEAT H760





BEEBY ARMCHAIR C007  
W560 x D620 x H820 SEAT H460  
padded seat available - C007P

COMPACT  
DESIGN

Illustrated in Nearly White weave

# Beeby

Designed in the classic Lloyd Loom style and especially popular for dining. The Beeby has low side arms to fit under most tables, saving space and making it ideal for casual dining.





Illustrated in Ivory weave

## Burghley

The original classic Lloyd Loom armchair, evocative of the elegance of the past and available in many guises. The flat weave seat is often ordered with a 1 inch cushion making it ideal for casual dining in restaurants or the home. There are several tables that complement the Burghley such as the Burghley, Canterbury, Belvoir or Babbington tables and for dining the Bistro table shown on page 33. The table illustrated is not available for sale.



**BURGHLEY ARMCHAIR C001**  
W700 x D655 x H850 SEAT H760  
padded seat available - C001P



**BURGHLEY ARMCHAIR WITH SKIRT C001S**  
W700 x D600 x H900 SEAT H460  
padded seat available - C001SP



Illustrated in Bracken weave



Illustrated in Bracken weave

## Bistro Stools

A classic and elegant stool shape which matches the Bistro chair. The style comes in two heights and also with a curved back as in the illustration.



## Athene & Neusis

A contemporary bar-stool in two heights to suit either kitchen work top, or bar. A similar style stool is also available without a weave back - the "Neusis".





# Bedroom Bathroom

Until the middle of the last century nearly every house had its comfortable Lloyd Loom chair in the bedroom and, where size allows, the bathroom. This is becoming the norm again, both at home and within the hospitality trade. What could be more welcoming and nostalgic?

We designed the Barton range with practicality in mind. It is new and very affordably priced. If heritage is what you desire, look at the Trader range and our linen baskets. Any of our classic chairs (see the "Garden Room" section) are perfect for the bedroom or bathroom – but two that are especially popular for the more substantial bathroom are the Bolero and Balmoral.

## Linen Baskets



CLASSIC  
LB003/H

W400 x D360 x H550/650



QUADRANT  
LB004/H

W330 x D330 x H550/650



SEMI CIRCLE  
LB005/H

W400 x D320 x H550/650





Illustrated in Nearly White weave

# Barton

The Barton set is new to our range. It was designed with practicality in mind as a simpler version of the "Trader" range. It is very affordably priced and comes in any of our beautiful standard colours. There is also a bedhead and stool to accompany the range - shown opposite with the "Trader" items.



**BARTON CONSOLE TABLE**  
**TC01G** W1010 x D470 x H770  
 available without glass - TC01W



**BARTON DRESSING TABLE**  
**TC02G** W1010 x D550 x H770  
 available without glass - TC02W



**BARTON BEDSIDE CABINET**  
**TC03G** W460 x D400 x H650  
 available without glass - TC03W





Illustrated in Duck Egg weave



# Trader

This is true Lloyd Loom heritage style from the 1930s. The dressing and bedside tables are classics, as is the stool. The stool is just as at home with the Barton range and the modern Woodstock headboard is a simple design, comfortable with most styles. All pieces are available in any of our beautiful colours.



**TRADER DRESSING TABLE**  
TDT100G  
W1010 x D560 x H780 (630)  
available without glass - TDT100W



**TRADER BEDSIDE CABINET**  
TBT45G  
W460 x D435 x H710 (630)  
available without glass - TBT45W



**TRADER DRESSING TABLE STOOL**  
ST002  
W535 x D330 x H430



**WOODSTOCK HEADBOARD**  
D40 x H920 x W(4ft/4ft6"/5ft/6ft)  
wall mounted



**OTTOMAN**  
OT001  
W880 x D380 x H450



## Balmoral

The Balmoral is a classic design that lives up to its name. It is a large, comfortable and curvaceous armchair with a padded weave seat.



BALMORAL ARMCHAIR C003SP  
W615 x D715 x H925 SEAT H440

## Bolero

One of our most admired models of recent years, combining the traditional Lloyd Loom features with a more contemporary line. It is striking either as a single chair for the bedroom or reception or as a casual dining chair - as it has been used in many restaurants and cafes. It is available with either a weave or fabric seat.



BOLERO ARMCHAIR C045W  
W570 x D640 x H825 SEAT H460



BOLERO ARMCHAIR WITH  
FABRIC SEAT C045F  
W570 x D640 x H825 SEAT H470

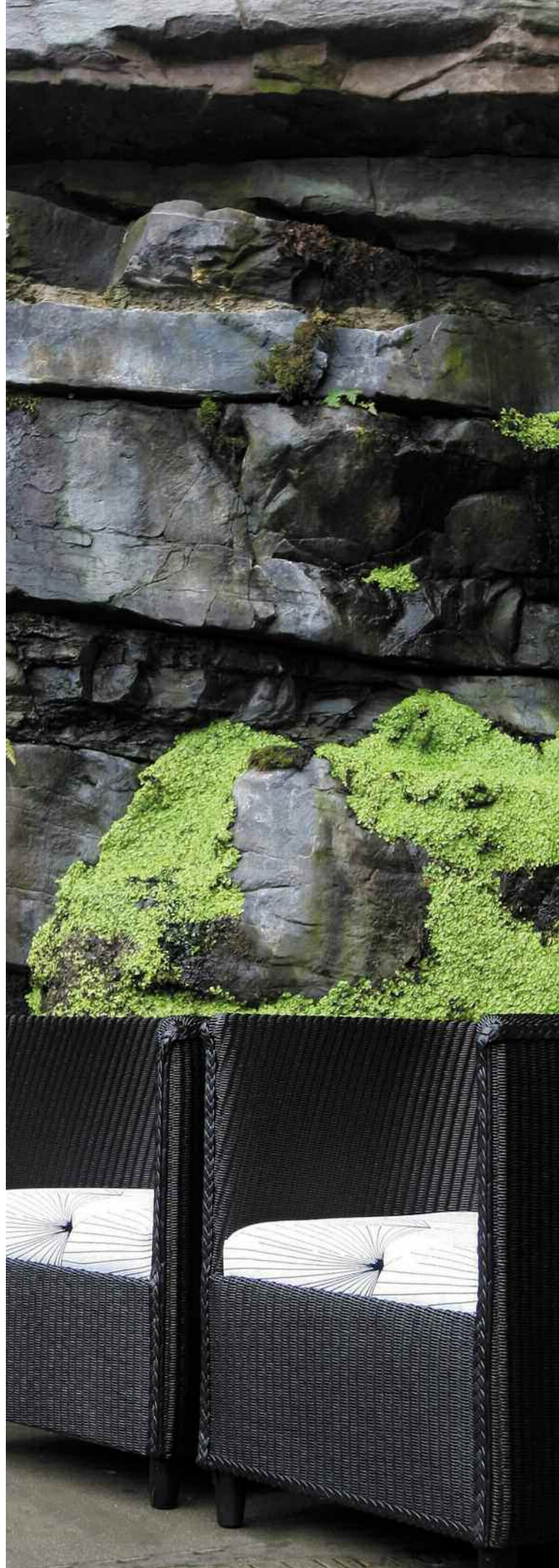


# Reception

The domestic hall or the reception area of a hotel or restaurant always benefits from a statement piece - and this is where some of our most interesting designs come into their own.

Whether you have room only for one striking Nemo, or space for an arrangement of Madrids, tailored to fit and covered in exciting fabric – we have something that will add grace, heritage and British flair to your design.

Shown on the next couple of pages are just a few suggestions for models, also try the "Garden Room" and "Bedroom" sections for more inspiration.







NEMO CHAIR DG01  
W790 x D655 x H735 SEAT H420

FUTURE  
CLASSIC

Illustrated in Clear weave

# Nemo

A modern and award winning design. A statement and sought after piece which will become a future classic.





Illustrated in Nearly Black weave



Illustrated in Sage weave with cushions in customer's own fabric

## Madrid

A simple sofa and matching chair which does not follow the more usual bent-wood designs of classic Lloyd Loom. It works well in reception areas and can be made in a number of widths to the client's specification. It is shown here with a delos cube seat.

## Orient

A 1930's classic, named after ss-Orient, the cruise ship for which it was originally commissioned. It has a 4inch drop-in cushion which can be upholstered in any of our standard fabrics or in the fabric of your choice. Note that the seat height is lower than standard.



**MADRID ARMCHAIR MC01**  
W860 x D810 x H775  
SEAT H430



**MADRID SOFA MS01**  
W1870 x D810 x H775  
SEAT H430



**ORIENT ARMCHAIR CO05D**  
W600 x D660 x H715  
SEAT H430



**DELOS CUBE WITH FIXED CUSHION CUBE02** W420 x D420 x H480  
also available with lift up seat (**CUBE07**)





Wells Dining Chairs - SOUTH SANDS HOTEL

# Contract Projects

Lloyd Loom of Spalding has been supplying the hospitality and leisure industries with classic English dining chairs and Reception pieces for many years.

Working with Interior Designers, Specifiers and Owners, we can offer advice on product selection and suitability, fabrics and colours, as well as offering space planning services and the possibility of bespoke adjustments, tailor making to a client's requirements.



Stamford & Burghley - TRESKO ESTATE



Bistro & Bantam - CHATSWORTH HOUSE



Wells Dining Chairs - TITCHWELL MANOR





# Tables

## Burghley



BURGHLEY COFFEE TABLE  
T001W/G DIA590 x H460



BURGHLEY LARGE COFFEE TABLE  
T002W/G DIA760 x H460



BURGHLEY TEA TABLE  
T003W/G DIA590 x H715



BURGHLEY LARGE TEA TABLE  
T004W/G DIA590 x H715

## Belvoir



BELVOIR COFFEE TABLE  
T009W/G W590 x D590 x H460



BELVOIR SOFA TABLE  
T005W/G W590 x L1200 x H715



BELVOIR TEA TABLE  
T006W/G W590 x D590 x H715



BELVOIR LONG TEA TABLE  
T008W/G W590 x L1200 x H715

## Stamford



STAMFORD ROUND TABLE  
T020W/G/O DIA1000 x H760



STAMFORD LARGE ROUND TABLE  
T021W/G/O DIA1200 x H760



STAMFORD SQUARE TABLE  
T022W/G/O W900 x D900 x H760



STAMFORD LONG TABLE  
T023W/G/O W900 x L1800 x H760

## Banbury



BANBURY RECTANGLE TABLE  
T064 W900 x L1500 x H770



BANBURY LONG TABLE  
T065 W900 x L1800 x H770



BANBURY ROUND TABLE  
T066 DIA1200 x H770

## Bistro



BISTRO ROUND TABLE  
T010W/G DIA760 x H760



BISTRO SQUARE TABLE  
T011W/G W760 x L760 x H760

## Buxton



BUXTON SIDE TABLE  
T031W/G W590 x L590 x H430



BUXTON COFFEE TABLE  
T028W/G W590 x L1200 x H430

## Babbington



BABBINGTON SOFA TABLE  
T012W/G W590 x L1200 x H460



BABBINGTON SOFA TABLE (SHELF)  
T014W/G W590 x L1200 x H460

## Canterbury

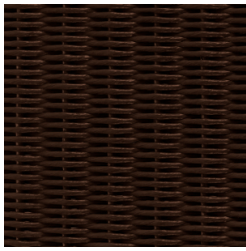


CANTERBURY COFFEE TABLE  
T013W/G DIA590 x H460

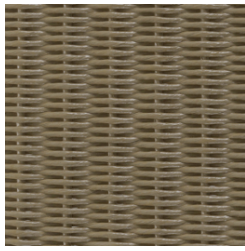
All of our tables (except for the Banbury) are available with weave or weave & glass tops. Our Stamford dining tables are also available with oak tops. Please specify W, G or O against the code. Brass clips are used as standard with our glass tops, a chrome finish is also available.



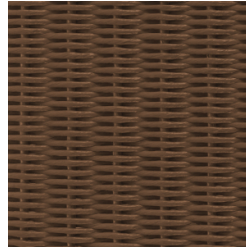
# Weave Colours



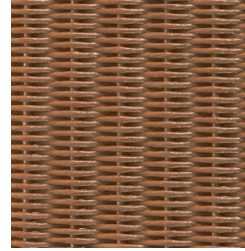
ESPRESSO



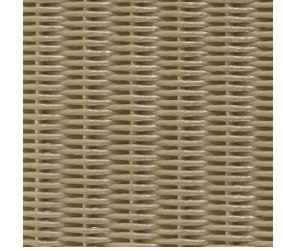
LINEN



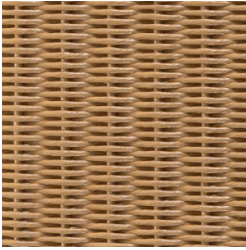
HAVANA BROWN



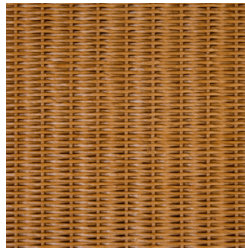
TERRA BROWN



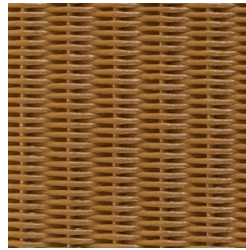
MUDLARK



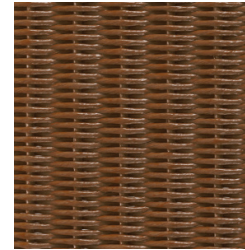
NATURAL



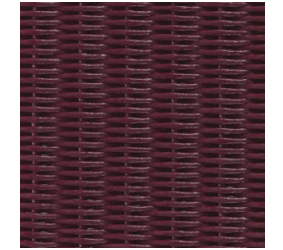
HONEY



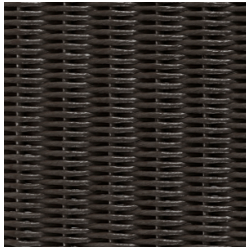
WALNUT



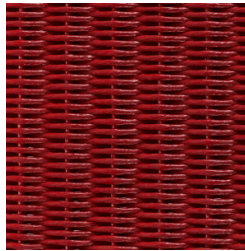
COGNAC



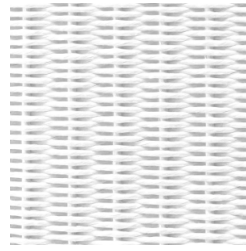
CHERRY



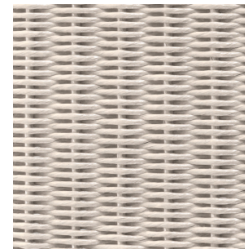
MAROON



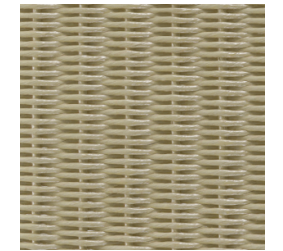
SIGNAL RED



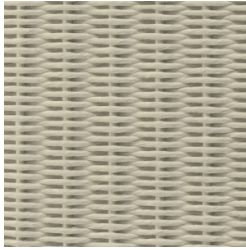
VIRGIN WHITE



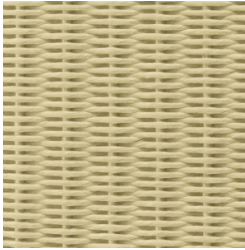
NEARLY WHITE



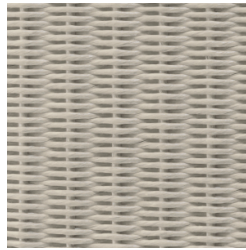
MUSHROOM



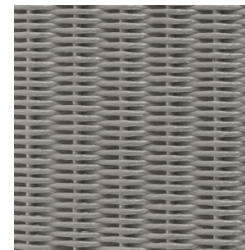
IVORY



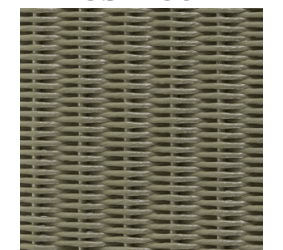
SANDSTORM



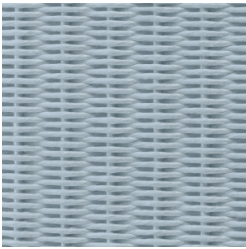
ARCTIC GREY



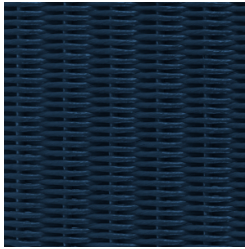
PLATINUM



PEBBLE



DUCK EGG BLUE



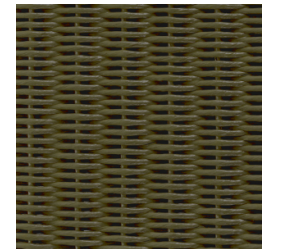
SWALLOW BLUE



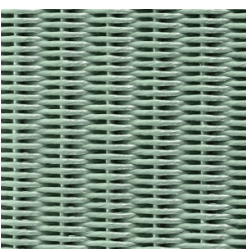
ANTHRACITE



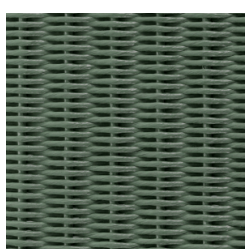
GRAPHITE



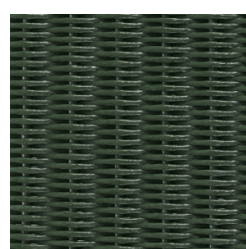
OLIVE GREEN



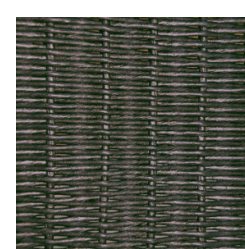
TARRAGON



SAGE



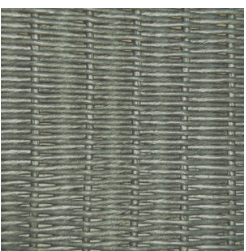
THYME



GUNMETAL



JULES GOLD



SILVER DUST



FARROW & BALL



RAL, NCS & SIKKENS

2017 WEAVE COLOURS

31 Standard colours

ALL Farrow & Ball colours

ALL RAL, NCS & Sikkens colours

Note: More images & colour samples available on request.

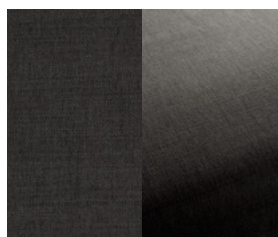


# Plain Fabrics

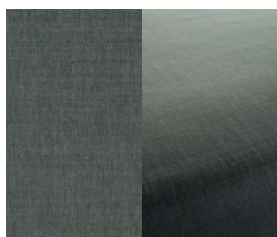
LINARA COLLECTION

63% Cotton, 37% Linen

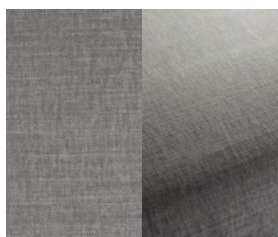
## GREYS



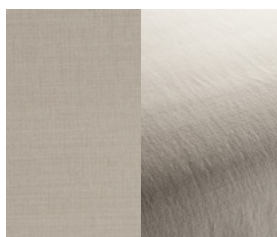
CHARCOAL



SLATE

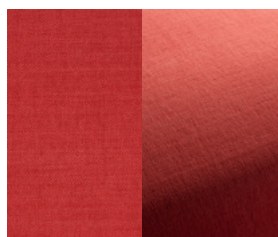


SILVER



QUARTZ

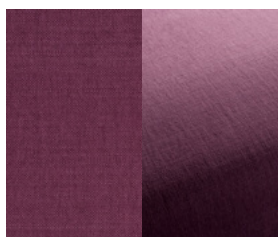
## BRIGHTS



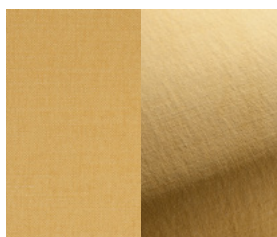
TERRACOTTA



RASPBERRY

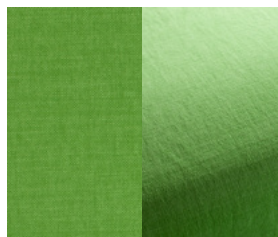


LAVENDER

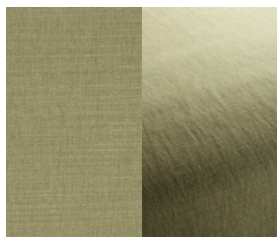


MUSTARD

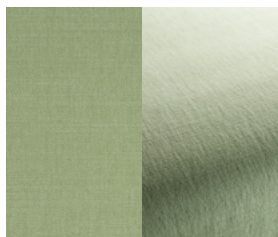
## GREENS



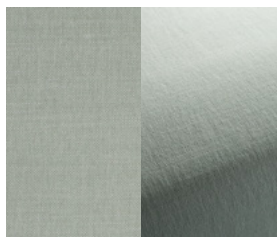
LIME



OLIVE

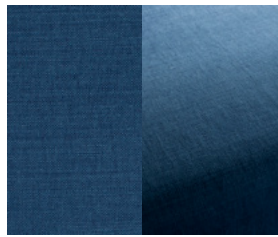


TATAMI



DUCK EGG

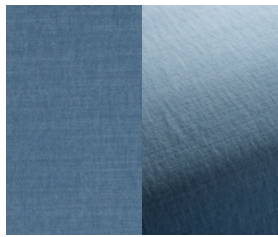
## BLUES



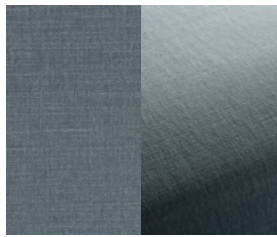
DENIM



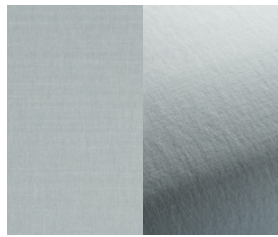
MARINE



TEAL

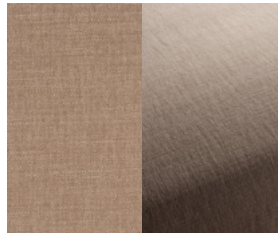


STEEL

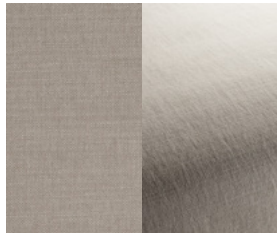


ICE

## NEUTRALS



PEBBLE



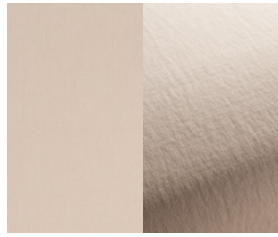
STONE



MUSHROOM



BUTTERBEAN

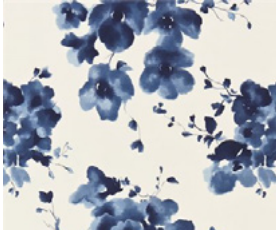


PARSNIP

The above fabrics and all other shades in the Linara range are available as standard on our furniture. We also offer a complete COM service, please contact us for the fabric requirements if you wish to use your own material.

# Pattern Fabrics

## SANDERSON



MANDARIN FLOWERS



CLEMENTINE



COCOS



ANAI'S YELLOW



JOSETTE

## TREND



MANILLA



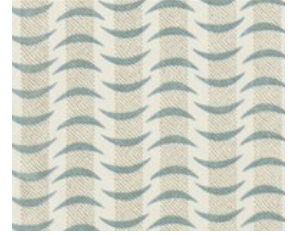
MILLA



CHESLYN

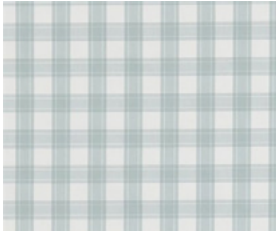


DANDELION CLOCKS



TRIBECA

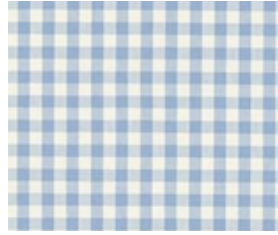
## TRADITIONAL



APPLEDORE

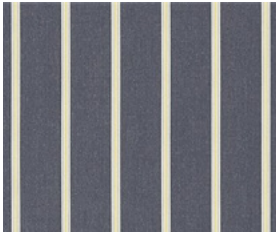


BRIGHTON



WHITBY

## COASTAL



ANNIS



SEATON



REGATTA

All pattern fabric options listed are available in a range of classic and contemporary colours.

Contact us if you would like a recommendation for a bespoke design scheme.

## Cushions



Most of our chairs can be supplied with 1 inch cushions.

If you would like to use any other fabrics (Customer's Own Material - COM) for cushions or upholstery we would be pleased to arrange this for you.

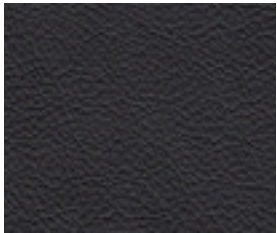


# Leathers

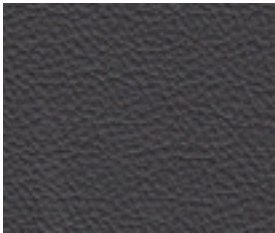
## STANDARD RANGE



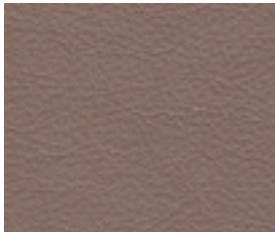
COFFEE



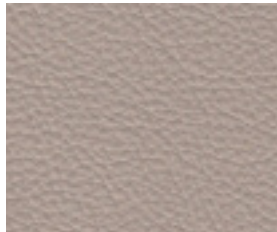
NEGRA



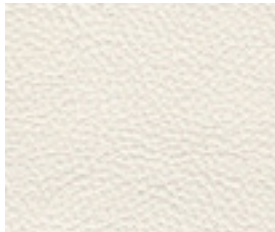
SMOKE



ZINC



PEARL



SNOW

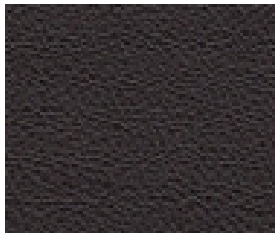
## LUXURY RANGE – ANALIN



CAVIAR



ANTHRACITE



EXPRESSO



COCO



SCHWARZ



LINIEN

## LUXURY RANGE – SEMI ANALIN



BLACK



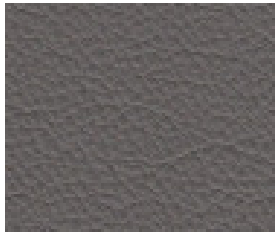
EXPRESSO



MOLE



ROCK



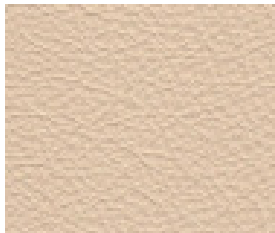
DOVE



CHILLIPEPPER



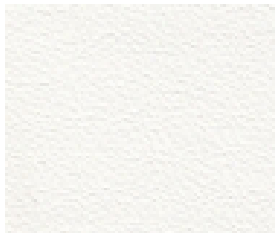
COCO



SAND



OFF WHITE



WHITE